

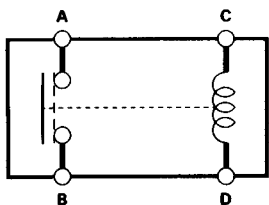
# Relay

## Test

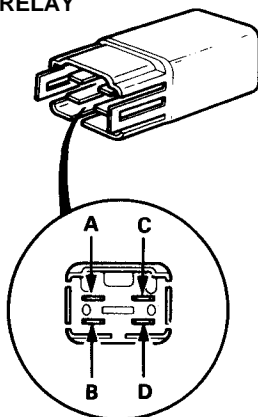
There should be continuity between the A and B terminals when power and ground are connected to the C and D terminals.

There should be no continuity when power is disconnected.

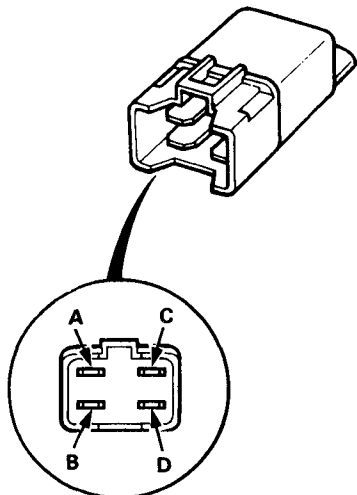
Terminal	A	B
Power (C-D)		
Connected	○	○
Disconnected		



- RADIATOR FAN RELAY
- CONDENSER FAN RELAY
- COMPRESSOR CLUTCH RELAY



- BLOWER MOTOR RELAY
- BLOWER MOTOR HIGH RELAY

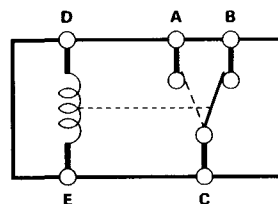


## Test

There should be continuity between the A and C terminals when power and ground are connected to the D and E terminals.

There should be continuity between the B and C terminals when power is disconnected.

Terminal	A	B	C
Power (D-E)			
Connected	○		○
Disconnected		○	○



### RADIATOR FAN MAIN RELAY

